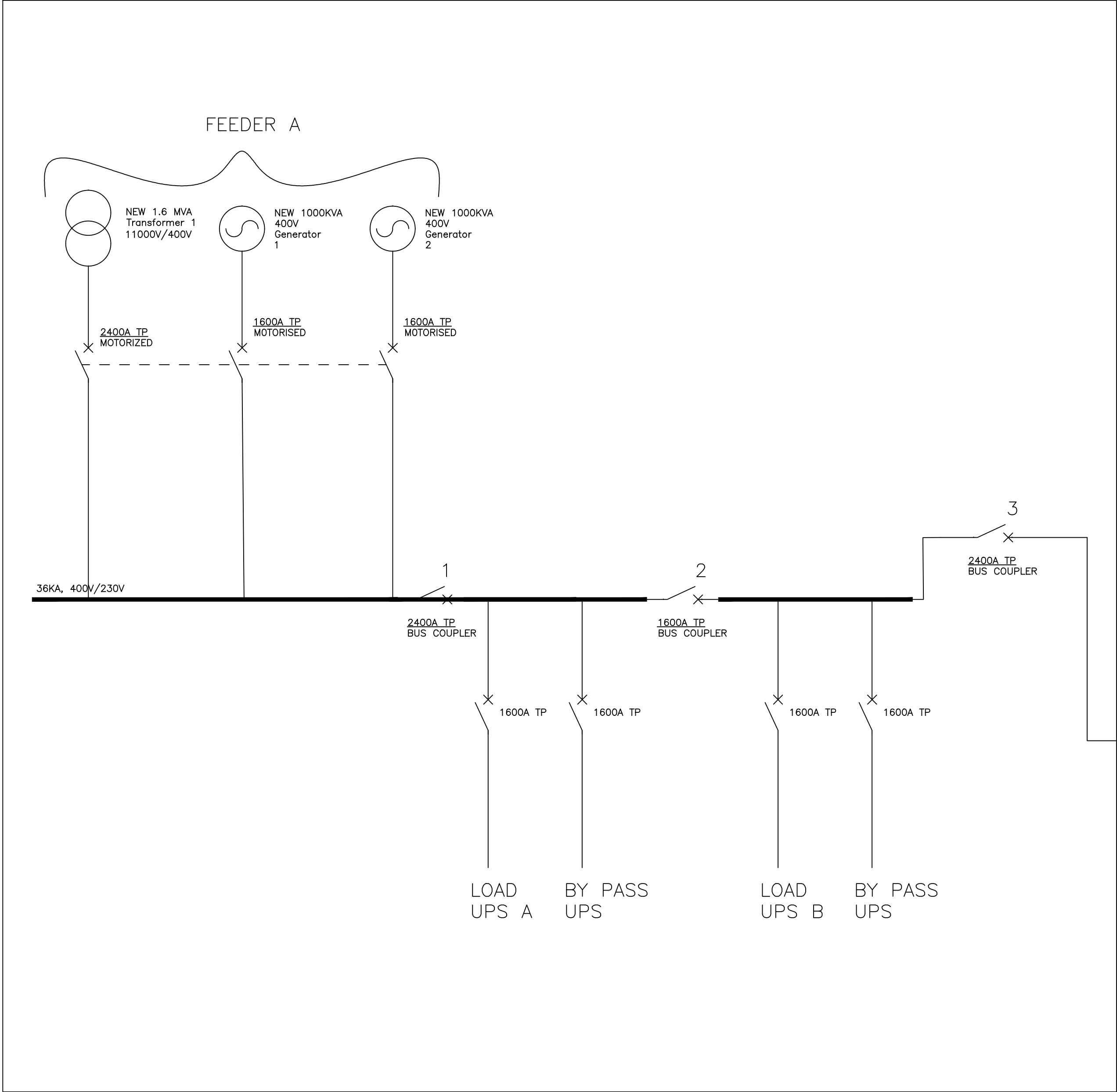
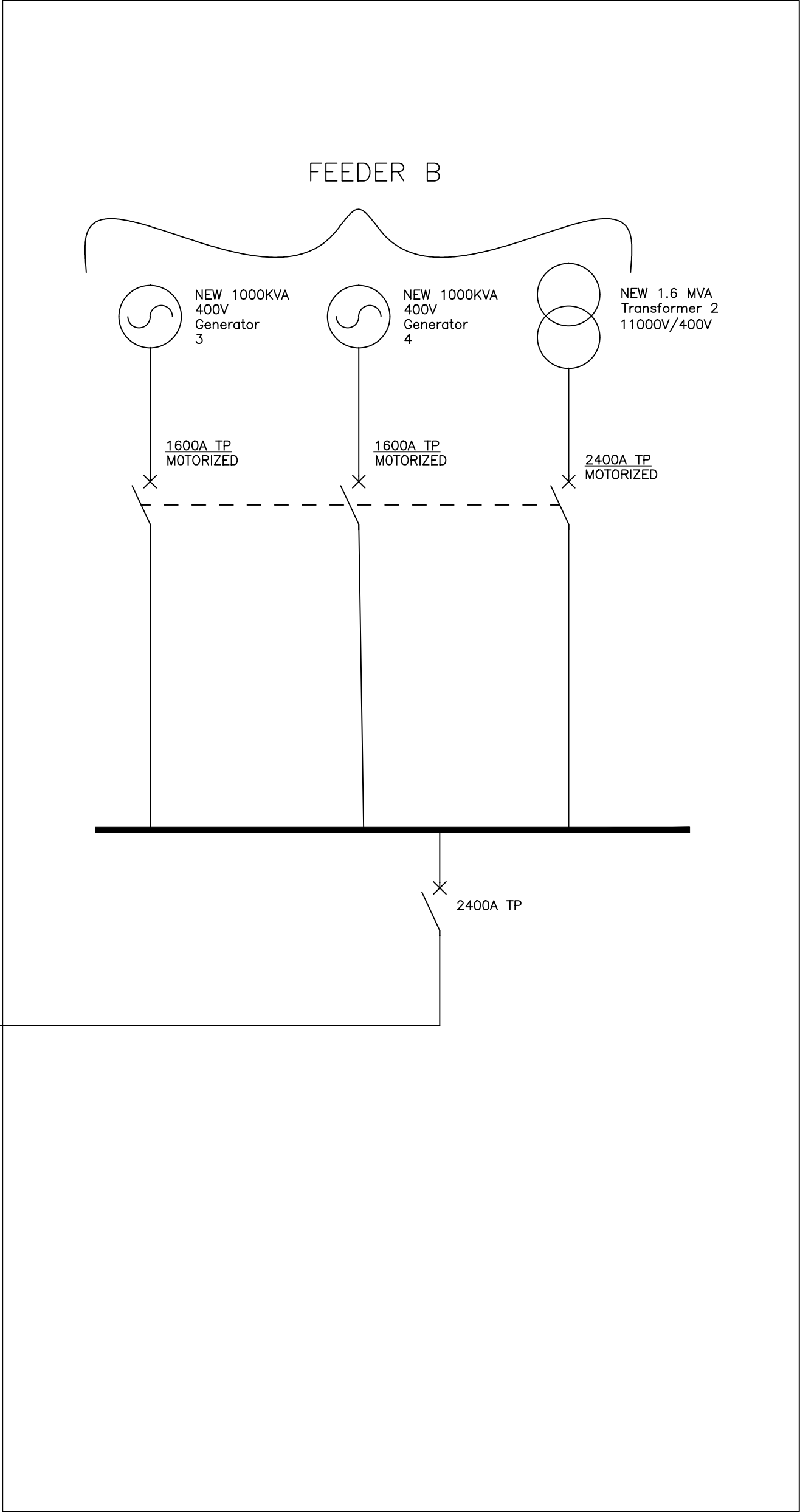


FEEDER A SCHEMATIC LAYOUT



- NOTES:
1. ALL ACB TO BE "ABB".
 2. ALL ACB TO BE WITHDRAWABLE.
 3. THE MOTORIZED ACD'S TO BE FITTED WITH 24V TRIP COIL AND 230V CLOSING COIL.
 4. THE BUS-COUPLER TO BE FITTED WITH A KEY SWITCH SYSTEM.
 5. BUS-COUPLER 1&3 TO BE CLOSED DURING NORMAL OPERATION.
 6. BUS-COUPLER 2 CAN ONLY BE CLOSED IF EITHER BUS-COUPLER 1&3 IS OPEN

FEEDER B SCHEMATIC LAYOUT



- CABLE DESCRIPTION KEY:
- | | |
|---|------------------|
| 1 | CABLE SIZE. |
| 2 | EARTH WIRE SIZE. |
| 3 | DISTANCE/LENGTH. |
| 4 | FAULT LEVEL. |
- GENERAL NOTES:
1. ALL FEEDER EQUIPMENT IS 3-PHASE, 4-WIRE UNLESS OTHERWISE INDICATED.
 2. ALL TYPE NUMBERS REFER TO ABB EQUIPMENT (or Equivalent). WHERE TYPE NUMBERS ARE NOT INDICATED OR NOT AVAILABLE, SUITABLE ALTERNATIVE ABB EQUIPMENT (or Equivalent) SHALL BE PROPOSED TO THE ENGINEER FOR APPROVAL.
 3. CABLE LENGTHS INDICATED ON THIS DRAWING ARE FOR FAULT CALCULATION PURPOSES ONLY.
 4. ELECTRICAL CONTRACTOR TO MEASURE ALL CABLES & BUSBARS PRIOR TO ORDERING.
 5. EACH DB IS TO BE FITTED WITH A WARNING LABEL AS PER SANS 10142-1.
 6. EACH DB IS TO BE ALSO FITTED WITH A WARNING LABEL INDICATING THAT IT HAS BEEN DESIGNED FOR CASCADING, AND THAT ONLY CIRCUIT BREAKERS OF THE SAME TYPE & SAME MANUFACTURER AS THE EXISTING SHALL BE INSTALLED IN THIS DB.
 7. THE DB MANUFACTURER IS TO CHECK, VERIFY & CONFIRM FAULT LEVELS OF ALL DB's WITH CONSULTANT PRIOR TO MANUFACTURING OF DB. NO CLAIMS WILL BE ENTERTAINED IN THIS REGARD.

QTY	ITEM No	PART No.	DESCRIPTION	MANUF.
MATERIAL LIST				
Studio Technology Private Bag X1 Auckland Park 2006			TITLE / TITLE	
ENGINEERING SERVICES			SABC RADIO PARK FEEDER A&B SCHEMATIC LAYOUT	
DO NOT SCALE THIS DRG.		DRAWN	T.M	DATE 13-06-19
TOLERANCES		CHECKED		
NO DEC PLACE ±0,5 ONE DEC PLACE ±0,2		ENG.		
		APPVD.	ST	
			DEPT.	DRAWING NO.
			ST15056	T
			SCALE N/A	SHEET 1 OF 7

DETAIL NO.	PART OF	WHERE USED	QTY.
------------	---------	------------	------